

# OBHS News

Newsletter of the Old-Brule Heritage Society, Inc. ©2017

Founded in 1998 to Gather, Preserve and Share the History and Heritage of the Old-Brule Region.

Volume XIX, Issue 6

December 6, 2017

## BOARD OF DIRECTORS

Dennis Hill, Amnicon, President  
Trish Hursh, Poplar, 1<sup>st</sup> Vice President  
Audrey Hakkila, Poplar, 2<sup>nd</sup> Vice Pres.  
Lila Ronn, Lakeside, Secretary  
Matt Miller, Superior, Treasurer

Janine Seis, Lake Nebagamon,  
Assistant Treasurer  
Dorothy Bergsten, Poplar  
Bruce Carlson, Superior  
Jim Mattson, Poplar  
Jody Swanson, Brule

Shirley Kankas-Umolac,  
Lake Nebagamon  
Charlene Harms, Duluth, Alternate  
Lois Pollari, Lake Nebagamon, Alternate  
Jim Pellman, Maple, Emeritus

## OLD-BRULE HERITAGE SOCIETY DECEMBER GENERAL MEETING

**Wednesday, December 13, 2017 at 5:00 PM, at the Maple Town Hall**

Old-Brule Heritage Society will begin its December General Meeting at the Town Hall in Maple with a covered dish luncheon. Members are asked to bring a dish or refreshments to share. This will be followed by our Program: OBHS Member, Brian Paulson, will give another talk on communities in Northern Douglas County lost to time, this time concentrating on those communities once found along the abandoned rights of way of the Northern Pacific Railroad, and of the Duluth, South Shore & Atlantic Railway. The public is invited to join us for our lunch and our program, and for our short business meeting which will follow. Being our Christmas meeting, a voluntary gift exchange will cap the evening, gifts in the \$5 to \$10 range, wrapped and marked M, W or E. We thank the Town of Maple for use of their hall. Please bring along a neighbor or a friend. Brian gives a great talk, which should make for an interesting evening. Note: We are starting an hour earlier due to winter's early darkness.

## FROM THE EDITOR:

By the time this goes to the printer we will be celebrating 100 years of Finnish freedom. Finland declared itself independent from Russia on December 6, 1917. With so many in our region connected by heritage to Finland it is appropriate that we celebrate this historic event and reflect upon what this heritage entails. Surprising to some will be recentness of Finland's independence with the recognition that most of those Finns who settled in our region, arrived here before Finland had joined the family of nations. Most Finns here, to gain American citizenship, had to renounce their allegiance to the Czar of Russia, and all that this meant, and shift allegiance to the Constitution of the United States of America. Both were mammoth entities stretching across continents, one defined by a man and his royal family, the other by legal documents of protest against another man and his royal family. The Czar and his family would be murdered not long before the Finnish declaration of independence, and another man would orchestrate the brutal transformation from a monarchy to a Marxist Socialist Workers' Paradise, skipping the brief Russian democracy and its collapse into the totalitarian proletariat dictatorship led by Lenin, the same man who would concede to Finnish demands for independence, fully expecting that the Finnish nation would quickly be absorbed into the great godless International. A terrible civil war would follow in Finland with the non-Marxist Whites taking control of the nation leading it on its tortuous path of freedom, relying upon West leaning forces in the Finnish culture, its Protestant Lutheranism like its Scandinavian neighbors in the North. The Finns were not Slavs, and had never been serfs. Their Christianity had been brought in the 1300s from Rome by an English bishop rather than from the Orthodox East. These deep Western cultural currents had been kept alive through the time of rule by Swedish kings and queens. Later, Lonnrot's *Kalevala* captured the even earlier mythic tales from Finnish tribal times which integrated Christian elements which helped shape the sense of Finnish identity and cultural independence. The earliest mass departures from Finland to America rode this Western heritage so that despite a formidable language barrier the Finns joined the great American experiment and have come to thrive as respected members and contributors to our land of freedom. This quest for freedom is a spiritual quest, variously defined but shared in the hearts of Finns and Americans. It is here that the theme of Finland 100, *Yhdessä*, Together, makes its most solid impact. We congratulate Finland on 100 years of freedom.

-Jim Pellman, Finnish-American

**1998 to 2005, 2006 to 2018 LOCAL HISTORY PHOTO CALENDARS FOR SALE.**

The Brule History Research Group, organized in 1995, produced its eighth and final calendar in 2005 with pictures of Brule's past. Proceeds from these annual calendar sales since 1998, when the first one was produced, are being used for the publication of the history of Brule, to be completed very soon. Limited numbers are available. Please contact Janet Follis, P.O. Box 114, Brule, WI 54820, at (715) 372-4948. Our 2018 Old-Brule Heritage Society History Photo Calendars will be for sale at \$9.00 each. Earlier issues are also available at \$5.00 (2006 - 2015), 2016 at \$6.00, & 2017 at \$7.00 in limited numbers. An e-mail address for more info: [musketeer6@cheqnet.net](mailto:musketeer6@cheqnet.net), and by phone: 715-363-2549, or please check our Website at [www.oldbrule.org](http://www.oldbrule.org). Shipping & handling: \$3.50 each, less for each for larger orders. We thank our donor businesses whose cards we display in the back of each calendar, and to those local businesses that are selling them for us each year, this year at Twin Gables & Cenex in Brule, Poplar Hardware & the Village Market, Sharon's Lakeview Restaurant & Midland Cenex in Lake Nebagamon. Or check with Jim in Maple at 715-363-2549. Our 2018 Calendars will soon be in print. We seek more advertisers.

*OPINIONS EXPRESSED IN THE OBHS NEWS ARE THOSE OF THE WRITERS ALONE & ARE NOT INTENDED TO REPRESENT OFFICIAL POSITIONS OF THE O-BHS ORGANIZATION.*

**ARCHIVES/COLLECTIONS COMMITTEE.**

The Archives Committee would welcome more volunteers to help in this important part of our OBHS mission. Our continuing project is learning to use the computer in support of our work, scanning, interpreting and indexing documents and photos, storing clippings and records and creating databases. The future holds more work on temporary and permanent exhibits using items in our collection, which the MSMA school space will permit. Our thanks go to our loyal committee members and document and artifact donors, and to the Town of Maple for Archive storage space. If you enjoy exacting work and interesting conversation please join us, we hope soon, under the Monticello School. Next meeting is yet to be determined. We expect our old routines to change as we transition to our MSMA site over the next few months. Please call Jim at 715-363-2549 to confirm our next Archives Committee meeting time and place. WELCOME!

**Unapproved MINUTES for the OCTOBER GENERAL MEETING  
OLD-BRULE HERITAGE SOCIETY, INC.  
Wednesday, October 11, 2017 at the Amnicon Town Hall**

A delicious pot-luck buffet was served to the 25 people attending. Thanks to the Town of Amnicon for the use of the hall. Dennis Hill gave a talk describing many of old tools he has collected and their use during logging days and or in building log homes. They also included a few kitchen gadgets as well. Thanks to him.

**BUSINESS MEETING**

**CALL TO ORDER:** President Dennis Hill called the meeting to order at 7:35 p.m.

**MINUTES:** Motion to approve the August 27<sup>th</sup> meeting minutes by Matt Miller and seconded by Mary Ann. Motion passed with no negative reply.

**TREASURER'S REPORT:** The following Treasurer's report was given by Matt Miller:

**General Fund**

Last meeting: \$1,189.67 Change: \$381.00 Current: \$1,570.67 Cash on hand: \$31

**Income:** \$150 Poplar Hardware book sales (wholesale), \$20 retail book sales, \$46 donation from Shirley Kankas-Umolac, \$400 Irene Brazill-Winkka memorial, \$15 memberships **Expenses:** \$52 for the Post Office Box, \$198 newsletter printing and mailing

**Windmill Fund**

Last meeting: \$3,026.88 Change: \$252.72 Current: \$3,279.60

**Income:** \$290.50 donations, bake sales, & merchandise sales (\$210.50 from the Apple Festival weekend) **Expenses:** \$37.78 electric bill

**MSMA Fund**

Last meeting: \$1,609.76 Change: \$1,068.09 Current: \$2,677.85 Outstanding debt: -\$2,608.37 Outstanding income: \$71.16

**Income:** \$1000 donation from Maureen Young, \$113.28 additional Laila Magnuson memorials, \$25 Paul Colby donation, \$48.55 in MSMA site work material refunds **Expenses:** \$26 flea market advertising bill (newspaper), \$75.62 Dahlberg Electric for the utility pole Outstanding debt: \$2,567.56 Kevin Mackie Construction, \$40.81 Jim Pellman for MSMA site material reimbursements Outstanding income: \$71.16 MSMA site work material rebates

**CD**

Last meeting: \$5,853.33 Change: \$0 Current: \$5,853.33

**Total Cash Assets:**

Last meeting: \$11,679.64 Change: \$1,701.81 Current Balance: \$13,381.45

Motion was made by Jim Mattson and seconded by Shirley to approve the report. Motion passed.

**COMMUNICATIONS:** There was phone call from Paul Colby re contacting the Town of Lakeside about possibly renewing the annual cash grant. A letter was going out over the president's signature.

A septic holding tank estimate of \$6,000 at MSMA came in for our inspection.

**OLD BUSINESS:**

**COMMITTEE REPORTS:**

**ARCHIVES:** On hold.

**WINDMILL/ESKOLIN HOUSE/TAYLOR'S BRIDGE:** Ron reported on the repairs to the Bridge. Work days were held with help from Earl T, Brian P., Bruce and Ron. The progress went well. Ron requested \$250.00 for the contractor. Thank you to all who helped. Nancy painted the windmill's green door.

Ron made a request to add a roof over the bridge to protect it. Jim asked that research be done on covering bridges of this type for traditional comparison. Ron will draw up plans and get an estimate.

**MSMA:** Dennis reported that the pedestal electricity is in. Kevin Mackie will be needing knee surgery with the windows & vault still needing to be sealed. Jim & Dennis will be working on the school paneling.

The old roof will have to be removed before installing new roof. Estimated cost is \$3,000.00.

The structure needs to be braced for winter.

Dennis gave an estimate on finishing the basement. Wiring, insulation, heater etc. \$1,460.00.

Mary Ann has an old teacher's chair for the school, from the Irving School in Duluth.

**MSMA Fund Raising Events:** Fund raiser at Kro-Bar discussed. Will try to schedule for February (near Valentine's Day?) Will make plans at our December meeting.

**MERCHANDISE:** Buy 4 Poplar History books for our inventory at \$18.00 and sell for \$20.00.

Shirley will order more books, caps and T Shirts. Jim M. made a motion to spend up to \$20.00 and use funds from the General Account. Second by Ron. Motion passed with no negative reply.

**FRIENDS OF OBHS FACEBOOK SITE:** Now over 700 members.

**WINDMILL DRAWING/PAINTING PRIZES:** No change.

**MEMBERSHIP:**

**Hard copy of newsletter opt out:** Members to let Jim know what version they'd like, or both.

**Membership Expiration Dates:** Members, please check labels on newsletter for accuracy.

**NEW BUSINESS:**

**SYMPATHY & ENCOURAGEMENT:** None noted.

**NEXT BOARD MEETING:** The Board meeting will be at Dennis' November 11, 2017 at 5 pm.

**NEXT GENERAL MEETING:** General meeting in Dec. Maple?

**DISCUSSION ON GETTING NEW MEMBERS:**

A motion was made by Ron to invite and or encourage all Friends of Old-Brule Heritage Society, website group, to join and attend our meetings, and to mention our old and new programs, seconded by Doreen. The motion passed with no negative replies.

**2018 CALENDARS:**

A motion was made by Jim Mattson to authorize Jim to make calendars for next year, seconded by Matt, the motion passed with no negative reply.

A motion was made by Doreen to allow Dennis to sign checks, seconded by Trish, the motion passed with no negative reply.

**ADJOURNMENT:** Motion by Jim Mattson to adjourn, seconded by Trish Hursh. Carried.

Respectfully submitted,

Audrey Hakkila, Acting Secretary

**FUND-RAISING MERCHANDISE FOR SALE**

The Society has available regional history magnets, plus Davidson Windmill memorabilia: mugs, caps, tee shirts, sweat shirts, key chains, buttons and photos for sale. Early issue magnets are going for \$1 each, or 6 for \$5.00, proceeds to our General fund. Windmill mugs, caps & tee shirt proceeds go into the Windmill Fund. **SEE OUR WEB SITE** ([www.oldbrule.org](http://www.oldbrule.org)) **FOR CURRENT SALE ITEMS AND PRICES.** Our Windmill vests are for sale for \$24.00. Popular has been our zipper front, hooded, *I've Been Through the Mill* sweatshirts and tee-shirts.

Our book, *Wisconsin Far Northwest*, and Nan Wisherd's books, *Brule River Country* (HC \$25.95, SC \$18.95) and *Pathways and Echoes*, Lakeside's *Sisu and Sauna*, (out for now) and *Amnicon From the Beginning*, are available for \$20.00 a copy + \$3.50 shipping. Wisconsin sales tax is included in all of our prices. Shipping and handling for mugs, caps and tee shirts is a \$4.00 minimum. All items are also available for purchase at our meetings or by contacting an OBHS member. Our booklet, *Davidson Windmill History* by Jim Pellman and Gene Davidson is available for \$8.00 (+\$2.00 shipping). Leigh P. & Richard Jerrard's new expanded and revised edition of *The Brule River of Wisconsin* is available at \$20.00 (+\$3.50 shipping). See our calendar ad above. Jane Pearson Grimsrud has released small and large print versions of *Brule River Forest and Lake Superior Cloverland Anecdotes*. Both are available for \$20.00 (+\$3.50 shipping). Poplar Hardware also has an inventory of most of our titles. Please check ahead for current availability. Also please contact our members for more info.

**Unapproved MINUTES for the NOVEMBER BOARD MEETING  
 OLD-BRULE HERITAGE SOCIETY, INC.  
 Wednesday, November 8, 2017, 5:00 p.m.  
 Home of Dennis & Arlene Hill, Amnicon**

In attendance: Bruce Carlson, Audrey Hakkila, Dennis Hill, Trish Hursh, Jim Mattson, Matt Miller, Jim Pellman, and Lila Ronn. Visitors: Ron Hendrickson, Arlene Hill, Brian Paulson.

Thanks to the Hills for hosting our meeting and providing us with some warm chili and other goodies on this snowy evening. Thanks also to those who brought additional food to share.

**BUSINESS MEETING:**

**CALL TO ORDER:** After a moment of silence in remembrance of those members and friends we have lost recently, President Dennis Hill called the meeting to order at 6:05 p.m.

**MINUTES:** Audrey moved to accept the minutes, published in the October 2017 issue of *OBHS*, of the previous Board Meeting held on Wednesday, September 13, 2017, at the Swanson's in Brule. Following a second of the motion by Trish, these minutes were approved.

**TREASURER'S REPORT:** Treasurer Matt Miller presented the following report effective on this date:

	<u>Current Balance</u>	<u>Changes since October General Meeting</u>
<b>GENERAL FUND:</b>	<b>\$ 1,736.67</b>	(Last meeting: \$ 1,570.67) <u>Income:</u> \$160 in dues, \$25 donations, \$17 book sales, \$36 food sales <u>Expenses:</u> \$72 Poplar books, \$2.06 cash for envelopes <u>Outstanding Debt:</u> \$10 WI Sales & Use Tax certification, \$ 6.35 certified mail, \$308 t-shirts and hats to stock the Windmill
<b>WINDMILL FUND:</b>	<b>\$ 2,882.92</b>	(Last meeting: \$3,279.60) <u>Expenses:</u> \$16.68 for Windmill perishables and supplies, \$250 to Dave Furtoh for bridge repairs via Ron H., \$130 for lawn mowing @ \$65 each
<b>MSMA FUND:</b>	<b>\$ 3,173.06</b>	(Last meeting: \$2,677.85) <u>Income:</u> \$650 donations <u>Expenses:</u> \$40.81 to Jim Pellman, \$113.98 to Dennis Hill for site material reimbursements <u>Outstanding debt:</u> \$2,567.56 Kevin Mackie Construction <u>Outstanding income:</u> \$ 71.16 MSMA site work material rebates
<b>CD</b>	<b>\$ 5,858.42</b>	(Last meeting: \$ 5,853.33 <u>Income:</u> \$5.09 interest
<b>TOTAL:</b>	<b>\$ 13,651.07</b>	(Last meeting: \$ 13,381.45)

Jim Mattson made a motion, seconded by Bruce, to accept the report. The Treasurer's Report was approved as presented.

**RECENT CORRESPONDENCE/COMMUNICATIONS:**

(1.) Letter from Wisconsin Historical Society requesting a donation from affiliates to the Mini-Grant Fund. Matt made a motion, seconded by Jim Mattson, to donate \$20.00 to this organization. Motion passed.

(2.) A call was made to Poplar Building Products to correct their billing on a \$ 46.75 charge for MSMA materials, which had erroneously been sent to the Oulu Cultural Center. They will be correcting this error.

(3.) Bill received from Brian Raivala for electrical labor on installation of pedestal. His original estimate was \$260.00. Thanks to Brian who donated much of his labor and charged only \$100 for the cost of installing the pedestal.

(4.) A check for \$ 40.62 was received from Dahlberg Light and Power to refund us for part of our advance payment for connect construction, which exceeded actual cost.

(5.) Check received from Jeanette Wisherd/Cable Publishing of Brule for \$75.00 (designated Calendar ad for \$25; Dues and Business Donation of \$50).

(6.) Bill from Cable Publishing for \$100 [five copies of Pathways (\$10 each); five (copies of Echoes (\$10 each)]

(7.) Jim P. delivered last back order to Poplar Hardware to finalize their order, Our Invoice No. OBG 17003 from August 21, 2017, by Lou Harnstrom. The total original order was \$224.00 (\$4 reduction for one worn book). Back order 2 was for the last 5 books; wholesale price \$70.00, due from Poplar Hardware. The earlier books have been paid for.

(8.) Inquiry from Daniel E.J. Mackin. (via DCHS) who had purchased years ago a painting of a Brule River damm (sic) north of Brule, which happened to be a dam featured in our current 2017 calendar. He is seeking further information.

(9.) Donation check for MSMA of \$250.00 received from Lulich's.

(10.) Letter & old photos from Joyce Maki Luedke. Included was a \$25 contribution to OBHS in respect for our work.

(11.) Finland Northland 100 is seeking support for its events. Jim M. made a motion to send this organization \$25.00; motion seconded by Bruce and passed.

### OLD BUSINESS:

#### COMMITTEE REPORTS:

**ARCHIVES:** The committee has temporarily stopped meeting as a group, waiting completion of the MSMA basement. As soon as we have made sufficient progress, a meeting may be called to tour and discuss the facility. The OBHS website remains active as part of this committee; thanks to Earl for keeping our site active and to Jon Winter who hosts our site. Jim responded to Mr. Mackin's request for Brule "damm" info. [see photo this newsletter].

**DAVIDSON WINDMILL/ESKOLIN HOUSE/TAYLOR'S BRIDGE:** The bridge repair is completed. Thanks to Ron H. for leading this effort and for mowing the grounds this summer. Thanks, also, to Donald Anderson for septic pumping. The early onset of winter has quieted activity on the site.

**Refrigeration:** Thanks to Ron for securing and installing the "new" refrigerator at the Eskolin House.

**Nature Trail:** The trail is in the discussion and planning stage.

#### MSMA:

**Construction:** Kevin Mackie has completed his work and needs to be paid. Jim M. moved to pay him the remaining amount due (\$ 2,567.77). Bruce approved the motion; the motion passed.

**Restoration:** The electrical pedestal is in operation; electrical service inside the building is now top priority. Brian Raivala has been contacted again to set up work times. Once we have inside service, we will move to installation of the electrical boiler unit with help from John Tuura, allowing us to work in comfort in the basement. All walls and the ceiling in the basement will have some type of insulative foam. Upstairs walls have been stabilized, pending work starting in the school areas in the spring on the roof. Plans include installing a new stud with each existing old stud. Because the spacing on these old studs ranges from 24 to nearly 36 inches, additional studs may be added. Most of the roof, which is tarped for the winter, will need to be replaced, both for safety and structure, but with restoration techniques. This is necessary to get access to the top plate which, because of its poor condition, will need to be totally replaced (found on the side walls only). As built, there is no plate on the gabled ends. Twenty foot stringers 2 X 8s will be on 24 inch centers, forming an attic floor for added storage. The rafters will also be replaced and roof and attic sheeting will be ship lap and square lumber rather than the 4 X 8 sheets common today. Discrete wiring for lighting and outlets will be installed, serviced from the breaker panel below. Jim and Dennis worked from staging on wheels inside, upstairs and downstairs, and will have to work quickly once the roof is opened in spring to avoid more water exposure. More help and funds will be needed to safely speed up the job. We had a surprise visit from Mr. Dick Ahola, President of Finlandia Foundation National, which gave us a generous grant in 2014. He encouraged us to apply for more funds. He and his wife were guests at Dick and Lila Ronn's and were on tour in the area before they headed to Finnfest in Minneapolis. We thank the Aholas for their interest in our MSMA.

**Fundraising Events:** The MSMA Flea Market/Bazaar on Saturday, August 26<sup>th</sup>, on the Maple Town Hall grounds was a modest success with rain all day. We hope to have better conditions in the future to reach full potential at this sale. Discussion has moved to having another musical fund raiser at Kro Bar. Planning will start earlier with advance sales of tickets. Other future events might also include community plays, dinner theater, pie-ice cream socials, etc. To date the latest round of contacts with businesses for donations and support have had some success, e.g. Lulich's, but as our requests have been for larger gifts and support, the process may take more time.

**MERCHANDISE:** Jim and Nan Wisherd, who is financing work on the calendar book, will resume work on the project as soon as their schedules permit. Still recovering from his move, Jim has started work on the 2018 calendar.

Shirley began work on conducting a thorough inventory and update of items for sale on our posted form on our website, but more work is needed. When the MSMA project is completed, a small gift shop can be set up.

#### MEMBERSHIP:

**Opt out of newsletter hard copy edition.** Persons interested in accessing an online electronic copy of the *OBHS News* in lieu of or in addition to a hard copy should contact Jim.

**Dates:** Members are asked to verify their mailing address labels on *OBHS News* for correctness of membership expiration dates. Please contact Jim if you have questions. He also requests that members keep up with their volunteer hours on the "blue sheets".

**Complimentary Memberships:** We will be giving complimentary memberships to the crews of the businesses that worked on our MSMA project.

**FRIENDS OF OBHS FACEBOOK GROUP SITE:** Thanks to Janine and Nancy Moreland for their creation and maintenance of this independent site, that continues to grow and is currently appreciated by over 700 users of all ages. This will be an ongoing process.

**OTHER OLD BUSINESS:** Arrangements were made to add Dennis Hill as an authorized 4<sup>th</sup> check signer. (Approved at the October 2017 General Meeting.)

### NEW BUSINESS:

**BLUEBERRY DEPOT OFFER:** The old Northern Pacific Blueberry Depot has been offered to OBHS by private owners. The Depot, built in 1901, measures 16 X 36'. Preliminary actions thus far include a tour of the structure by Jim Pellman, Dennis Hill, Brian Paulson, Ron Hendrickson, Jody Swanson, and Dan Bergsten. Steve Rannenberg, Douglas

County Planning and Zoning Administrator, has been contacted regarding a potential placement for the building. The building is in good condition and would represent an important component in our history. The NP Railroad Historical Association and Burlington Northern could be contacted for grant support. Were OBHS to accept this offer, given our current obligations with MSMA construction/renovation, the move & development would be delayed for at least one year. The Board decided to proceed with further information-gathering.

**SYMPATHY AND ENCOURAGEMENT:** Sympathy to the family and friends of Barbara Stanley and Ruth Beckman. Encouragement and support to Velma Doby who welcomes company at Villa Marina.

**NEXT GENERAL MEETING:** Wednesday, December 13, at the Maple Town Hall beginning with a Pot Luck Lunch at 6:00 p.m. Christmas gift exchange after meeting, \$10 limit, wrapped gift marked W, M, or E. Brian Paulson will provide the program, exact topic to be announced soon. Given the large audience that attended Brian's last program, we expect a good turnout. Janine will be asked to produce some posters to be displayed throughout the area, so that everyone is aware of this opportunity.

**NEXT BOARD MEETING:** Wednesday, 5:30 p.m., January 10, 2018 at the Hill residence.

**ADJOURNMENT:** Jim M. moved to adjourn the meeting, followed by a second from Matt. Motion carried. President Dennis Hill adjourned the meeting at 7:50 p.m.

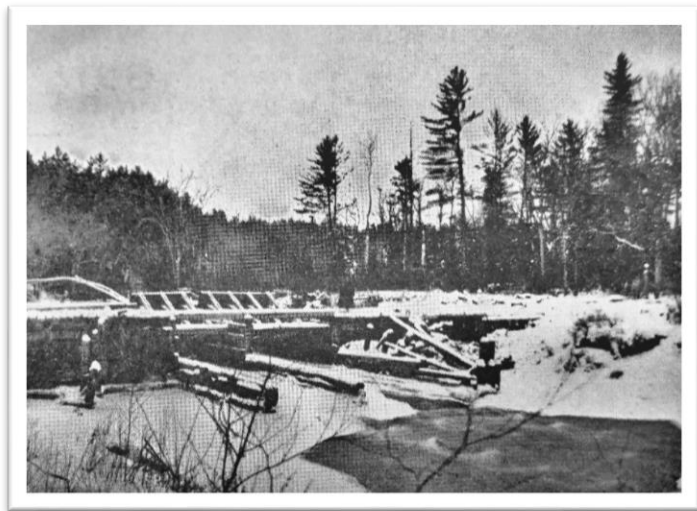
Respectfully submitted,  
Lila M. Ronn, Secretary

### Area History: No. 119

*This picture and text appear for the month of December in our 2017 OBHS Historical Calendar.*

#### **24.17-12. Brule River Improvement Company, Logging Dam Number Three, Winter, 1892-93.**

The *Ashland Daily Press*, Annual Edition for 1893, the source for this photograph, provides specifics for this dam: "Dam No. 3 is 123 feet across from bank to bank and located in a very picturesque spot. It is 16 feet high, with a ten-foot head of water. Each bank is excavated from some distance back and piling driven to make it absolutely impregnable. A row of sheet piling was driven at the water's edge – then heavy sills bolted on. Back of this another row of piling is driven – and in front two other rows of piling to support the dam proper. The plank is very heavy and corked as tight as the bottom of a vessel. Two large sixteen-foot



gates are raised when water is needed to flood the river below. The logs shoot through the sluices and the extra flow of water drives them safely over the rapids to other dams below – located nearly at the mouth of the river – where it empties into Lake Superior. The great difficulty heretofore met in driving logs on the Brule has been the logs hanging up on the river. Over 3,000,000 are on the banks from last year. This upper dam is calculated to cover about fifty to sixty miles of the stream and was completed the week before Christmas, and built under supervision of Mr. A. A. Arnold, one of the best dam builders in the country. It was very expensive work, but it was made to last for years – as long as there is a log on the river." The romance of the river log drives would end on the Brule in seven years, and seven years after that the industrial use of the river in any manner, including for electric power, would be over. The river was becoming a symbol of a deeper past when time stood still, and this symbol would come to rule.

~ NOTICES ~

**MEMBERS:** Dues collection for 2018 began at our Annual Meeting in August & will continue into 2018. Please fill in your volunteer hours on your Blue Sheets for 2017-2018 for turn in next July 31st. This hour tally runs from Aug.1 (2017) to July 31, 2018. Please contact our Secretary or Jim for a new Blue Sheet or check our website for forms.

**THANK YOUS & RECOGNITIONS:** Thanks to Member Ed Privette for his recent memorial to his late mother, Helen, on what would have been her 100<sup>th</sup> birthday. Congratulations to all the many OBHS members who are or have turned 70 this year. To our local towns which continue to offer their town halls for our meetings at no charge except for a clean kitchen and floor when we depart. To Brian Raivala, musician and electrician, for his contributions at MSMA and for his music.

**OUR ENCOURAGEMENT & SYMPATHY:** To family & friends of the many, listed here, whom we have lost recently: **Fredrick "Fred" L. Luostari**, 52, Maple, who died October 3, 2017 in the Town of Cloverland, born in 1964 in Superior to Marvin and Rose (Morrisette) Luostari, worked for Hood Equipment as a heavy machinery mechanic in Iron River, married Mary Jo Anderson in 1984, survived by his wife; three daughters, Ashley, Jennie Lee, and Cassie; all of Mpls, 1 grandson, Ethan Fredrick Ramirez Luostari, Mpls & his mother, Rose Luostari, 2 brothers, Billy Krawczyk & Mike Luostari, s sister, Sherri Hendrickson, all of Poplar, preceded in death by father Marvin and brother-in-law Dick Anderson.

**Judy J. (Colby) Little**, 71, Superior and Poplar, who died November 26, 2017 at Essentia Health St. Mary's Hospital in Duluth, born in 1946 in Superior, daughter of the late Gerald and Louise (Edquist) Colby, survived by four children, Yvonne Little, William (Gina) Little, Mitchell (Tracy) Little & Vicki (Scott) Luostari, 8 grandchildren, and 12 great-grandchildren

**Drolson, Edward J. "Ed"**, 83, Plymouth, MN, who passed away November 18, 2017, born to the late Ludy and Evelyn Drolson, born and raised in Lake Nebagamon, graduate of UWS, taught in Racine and Robbinsdale, married Luise 60 years ago, survived by her and also by sister, Janice (Richard) Parish, children, Paul Drolson and Paula (Dave) Kylo and three grandchildren, preceded in death by brother, Don Drolson, loved summers at Lake Nebagamon.

**Delpha M. (Severin) Kauti**, 101, Superior, who died at home November 5, 2017, born in 1916 in Minneapolis, the oldest of sixteen children born to Emma (Royal) Severin and Peter Severin, was a homemaker and cook, married Leonard Kauti, and had 10 children, preceded in death by her parents and husband, two sons, Jack and Larry Kauti and 15 siblings, with a sister, Barbara Bautch, surviving and 5 daughters and 3 sons, and a vast number of offspring.

**Ruth M. Beckman**, 86, Superior, who died November 9, 2017 at St. Luke's Hospital Hospice in Duluth, born in 1931 in Maple to the late John & Verna (Haukkala) Pellman, a waitress in Superior & Two Harbors, married Kenneth Beckman in 1976 & celebrated 24 years of marriage before his passing in 2000, survived by two sons, Duane (Janet) Kronlund, Two Harbors, MN and Daniel (Nancy) Kronlund, Sun City, West, AZ & 3 grandchildren, 6 great-grandchildren; one brother, Ernest (Liz) Pellman, Maple, WI; two sisters, Irene Parenteau, & Edith Warner, Superior, preceded in death by her first husband Daryl Kronlund, son Charles Kronlund, her parents, brothers Carl & George Pellman & sister Delores Gramer.

**Natalie L. Turner**, 17, Chetek, WI, who died alongside her mother, **Brenda L. (Eckard) Turner**, 55, October 27, 2017 at their home, survived by a brother, Kyle (Brette) Venier, Poplar, sisters, Briana Venier, Chetek, WI & Mikala Turner, Barron. Brenda is survived by her father, Ted Eckard; two sisters, Jennifer (Pat) Lustig, Solon Springs, WI and Paula (Jon) Aamodt, Lake Nebagamon, WI and one brother, Steve (Glory) Eckard, Hermantown, MN.

**Bernard F LaValley**, 86, Superior, who died on July 25, 2017, in a Duluth Hospital, was born in Poplar, WI and was 4th out of 13 children born to George and Mary LaValley, moved in his youth to Superior where he became an all-American athlete at UWS. A large family survives.

**Mary Kay (Wilson) Tuura**, 66, Iron River, who lost her battle to cancer on October 30, 2017 with her loving husband Mike by her side. She was born on March 13, 1951 in Superior, the daughter of Jack and Gladys (Hansen) Wilson, graduated from high school in Two Harbors, MN in 1969, became a cosmetologist retiring after 41 years, survived by Mike, 2 daughters, Leah (Cory Holsclaw) Lehto - Iron River and Marietta (James) Johnson - Iron River, a son, William (Katie) Tuura - Iron River, & 6 grandchildren

**Ruth L. Hannula**, 88, Poplar, who died October 13, 2017 at Middle River Health & Rehab Center in South Range, was born in 1929 in Mohawk, Michigan to William and Mae (Aho) Wuolukka, graduated in 1946 from Calumet High School, worked as an executive secretary for the School District of Maple for thirty years retiring in 1989, married Helmer Hannula in 1948 and celebrated 50 years of marriage before his passing in 1999, survived by three sons, Brant (Doris) Hannula, Wentworth, Dan (Joan) Hannula, Abbotsford and Jim (Char) Hannula, Osseo & daughter Brenda (Rod) Olson, Sandy, UT and their families, and one sister, Yvonne (Clarence) Fisher, Hancock, Michigan.

**Mark G. Smith**, 54, Lake Nebagamon, who died October 8, 2017, was born in 1962 in Green Bay, son of the late John and Doris (Hagen) Smith, worked as a store manager & sales representative, with survivors including his wife, Diane (Sheahan) Smith, sons, Sean Smith and Connor Smith, both of Lake Nebagamon, daughters, Krystle (Travis Kocejka) Smith, Shakopee, Minnesota, Kiernan Smith and Reese Smith, both of Lake Nebagamon.

**Michael J. Brown**, 62, South Range. who, died on October 4, 2017 at Middle River Health and Rehab Center, was born on December 15, 1954 in Superior to the late Charles & Nellie (Calendar) Brown, was a logger for many years, survived by 3 daughters, Angela (John) Green, Superior, Patricia (Kip) Tolzmann, Bennett, & Amanda (Nate) Hawkenson, Superior, 1 son, Jeramy (Michelle) Brown, Bennett, 2 sisters, Patricia Miller, Superior and Peggy (Daniel) Woodhull, Poplar, WI & one brother, Robert Brown, Bennett.

**And who have we missed or forgotten? May they all rest in peace.**

**RETURN ADDRESS:****OLD-BRULE HERITAGE SOCIETY, INC.**

4808 S. County Road F, Post Office Box 24  
Maple, WI 54854

**Anyone interested in joining the Old-Brule Heritage Society is encouraged to attend any of our meetings and programs. To join they may also contact any member or the Board at the return address above, or our Treasurer, Matt Miller, at the same address. Our annual dues are \$15.00 for individuals, and \$25.00 for families, payable after our annual meeting in August. Higher levels of support are always welcome.**

**New Members and Visitors are Always WELCOME!**

**CALENDAR.**

**December 6**, Wednesday, 5 pm. Finland 100 Gala in Depot in Duluth. Finland's Centennial.

**December 13**, Wednesday, 5 pm. OBHS General Meeting at Maple Town Hall. Program: Brian Paulson on Abandoned Communities along the Abandoned NP and DSS&A RRs. Pot luck lunch, Business Meeting, Gift Exchange.

**December 24**, Sunday. Christmas Eve

**December 25**, Monday. Christmas Day.

**January 1**, Monday. New Year's Day.

**January 15**, Monday. Martin Luther King Day. Submissions for February OBHS News are due.

**February 12**, Monday. Lincoln's Birthday.

**February 14**, Wednesday. Ash Wednesday, Valentine's Day, OBHS Board Meeting.

**February 19**, Monday, Presidents' Day.

**February 22**, Thursday. Washington's Birthday.

**March 11**, Sunday. Daylight Saving Time begins.

**OLD-BRULE HERITAGE SOCIETY WEB SITE ON LINE**

The Website Committee has been maintaining our Web site ([www.oldbrule.org](http://www.oldbrule.org)). **Earl Granroth** continues to make regular updates, and **Jon Winter** of **Winter Systems** in **Superior** is our Web host at no charge to us.

**Thanks again to Earl G. and Jon W.**