

OBHS News

Newsletter of the Old-Brule Heritage Society, Inc. ©2017

Founded in 1998 to Gather, Preserve and Share the History and Heritage of the Old-Brule Region.

Volume XIX, Issue 1

February 3, 2017

BOARD OF DIRECTORS

Shirley Kankas-Umolac, Lake
Nebagamon, President
Dennis Hill, Amnicon, 1st V. P.
Dan Bergsten, Poplar, 2nd V. P.
Lila Ronn, Lakeside, Secretary

Janine Seis, Lake Nebagamon, Treasurer
Dorothy Bergsten, Poplar
Mary Ann Gronquist, Parkland
Audrey Hakkila, Poplar
Matt Miller, Superior, Asst. Treasurer

Doreen Swanson, Brule
Hope Swenson, Lakeside
Charlene Harms, Duluth, Alternate
Lois Pollari, Lake Nebagamon, Alternate
Jim Pellman, Maple, Emeritus

OLD-BRULE HERITAGE SOCIETY FEBRUARY GENERAL MEETING

Wednesday, February 8, 2017 at 6 p.m.

Maple Town Hall on US Highway 2

PROGRAM: Our speaker, Dennis Hill, will give another installment on the Theme:

The Layers of Local History. He will look closely and changes in mind set across the layers. Dennis is our past President & current 1st Vice President, & besides his talk he always has antique items to share, some hard to identify.

We will open with our Pot Luck Dinner. Please bring a dish or refreshments to share for our meal which will start our evening at 6 p.m. Our Program then follows, with our business meeting closing out the evening. We want to thank Dennis for sharing with us, and Thanks to the Town of Maple for the use of the hall and its serving facilities. Guests and friends are always welcome! Please join us for great food and great Old-Brule history.

FROM THE EDITOR:

With *Heikinpäivä* behind us we wood burners should have half of our winter wood supply left. *Heikinpäivä* is Finnish for *Henrik's* or *Henry's* or *Henrietta's Day*, January 19th. The Finnish/Swedish calendars traditionally incorporated the names of Christian saints, each being given their day in the year. If you shared the name of a saint his or her calendar day is your "name day" and this was celebrated much like a birthday, if not more so. The very Finnish-American city of Hancock, Michigan, in recent years has created a winter celebration in the middle doldrums named after *Heikinpäivä*. Incidentally, my wood pile might just make it through to summer, due to the long January thaw we had this year. It won't be long before the pilgrimages to Finland, Minnesota for St. Urho's Day, and that to Palo-Markham for Laskiainen are before us with the Brimson Sisu race to follow.

We are currently in the planning stages of another Monticello School Museum & Archives benefit musical event, hosted by Dean Baillie at Brule's Krobar venue. We have some musician volunteers on board, being contacted by Ted Pellman. The Music Benefit Committee will be meeting soon to finalize plans, hopefully for some time in March. There will be the flurries (or storm) of preparation, gathering of donations for drawings for prizes, but not on the scale of the first benefit, and there will be publicity to release, and tickets to sell with talk also of a 50/50 drawing. We have to thank everyone involved as this event will boost us into the summer construction season and help us meet the many expenses, foreseen and unforeseen, of our crucial MSMA school project. Promises are that our basement will be high on the construction list this year with lots of work to follow. We will need assorted help in restoring the building, and we hope many will be willing to volunteer their skills as we move forward.

Finally, the election of a new U.S. President always has with it the commotion of inevitable change. We in the hinterlands usually go on with life, casting a glance at headline stories on TV or in the Press, allowing the pundits and political experts to build the bridges of amicability that make our system of checks and balances work. This time around the checks seem to outnumber the balances. There is a kind of wheezing I haven't heard before as the system creaks. I believe she'll make it but watch for sparks. There is work for bridge builders in Washington.

-Jim Pellman

1998 to 2005, 2006 to 2017 LOCAL HISTORY PHOTO CALENDARS FOR SALE.

The Brule History Research Group, organized in 1995, produced its eighth and final calendar in 2005 with pictures of Brule’s past. Proceeds from these annual calendar sales since 1998, when the first one was produced, are being used for the publication of the history of Brule, to be completed very soon. Limited numbers are available. Please contact Janet Follis, P.O. Box 114, Brule, WI 54820, at (715) 372-4948. Our 2017 Old-Brule Heritage Society History Photo Calendars are for sale at \$9.00 each. Earlier issues are also available at \$5.00 (2006 - 2014), 2015 at \$6.00, & 2016 at \$7.00 in limited numbers. An e-mail address for more info: musketeer6@cheqnet.net, and by phone: 715-363-2549, or Laila at 715-372-4963, or please check our Website at www.oldbrule.org. Shipping & handling: \$3.50 each, less for each for larger orders. We thank our donor businesses whose cards we list in the back of each calendar, and to those local businesses that are selling them for us each year, this year at Twin Gables & Cenex in Brule, Poplar Hardware & the Village Market, Sharon’s Lakeview Restaurant & Midland Cenex in Lake Nebagamon. Or check with Jim in Maple at 715-363-2549.

OPINIONS EXPRESSED IN THE OBHS NEWS ARE THOSE OF THE WRITERS ALONE & ARE NOT INTENDED TO REPRESENT OFFICIAL POSITIONS OF THE O-BHS ORGANIZATION.

ARCHIVES/COLLECTIONS COMMITTEE.

The Archives Committee would welcome more volunteers to help in this important part of our OBHS mission. Our continuing project is learning to use the computer in support of our work, scanning, interpreting and indexing documents and photos, storing clippings and records and creating databases. The future holds more work on temporary and permanent exhibits using items in our collection, which the MSMA school space will permit. Our thanks go to our loyal committee members and document and artifact donors, and to the Town of Maple for Archive storage space. If you enjoy exacting work and interesting conversation please join us at 1 p.m., still at the Pellmans’ on a Monday afternoon. Next meeting is February 6th, and generally every other Monday thereafter, but we expect this routine to change as we transition to our MSMA site. Please call Jim at 715-363-2549 to confirm the next meeting time and place.

**Unapproved MINUTES of the DECEMBER GENERAL MEETING
OLD-BRULE HERITAGE SOCIETY, INC.**

Wednesday, December 14, 2016, 6:00 p.m. Amnicon Town Hall

The evening started with a holiday buffet, replete with delicious foods brought by those in attendance. Thanks to everyone who contributed, who set up the room and its decorations, and who helped take down tables and chairs. Thank you to the Town of Amnicon for the use of their Town Hall and to Dennis for making arrangements. Twenty-one members and guests signed the attendance roster.

PROGRAM: Jim Pellman presented images on the OBHS 2018 Calendar, adding a few additional slides of local historical interest which have been recently discovered. Everyone appreciated seeing these photos and the accompanying information. Thanks, Jim.

BUSINESS MEETING

CALL TO ORDER: 1ST Vice-President Dennis Hill called the meeting to order at 7:58.

MINUTES: Mary Ann moved to approve the minutes, as published in the December 2015 *OBHS NEWS*, of the General Meeting held on October 12, 2016 at the Cloverland Town Hall. After a second by Audrey, the minutes were approved.

TREASURER’S REPORT: Treasurer Janine Seis submitted the following report effective December 14, 2016, via email:

	<u>Current Balances</u>	<u>Changes since November Board Meeting</u>
CD:	\$ 5,838.25	No change.
GENERAL:	\$ 1,569.45	(Last month: \$ 956.38.)

		Additions: \$ 1,061.07 (Memberships - \$250; Calendar ads & donations - \$750; Pre-order calendars- \$18; Lake Owen EBay book sale proceeds-\$43.07.)
		Subtractions: \$ 448.00 (State Farm Insurance-\$228; Newsletter printing & postage - \$220)
CASH:	\$ 30.00	No change.
WINDMILL:	\$ 2,445.18	(Last month: \$ 2,507.96)
		Subtractions: \$ 62.78 (ECE Electric bills--\$33.85 for November & \$28.93 for December)
MSMA:	\$ 16,622.17	(Last month: \$ 18,393.17)
		Subtractions: \$1,771.00 (\$1,746.00—Check #1021 for windows & doors; \$25.00 for half of vintage desk purchase as directed by Nan Wisherd in her donation reimbursed to Jim Pellman). \$30 for Dahlberg electric application not presented yet because of delay in construction.

TOTAL MONETARY

ASSETS: \$ 26,505.05 Last month -- \$ 27,725.76

Assistant Treasurer Matt Miller received additional memberships during this meeting which will be reflected in next month's report.

Doreen moved to accept the Treasurer's Report as presented. Following a second by Arnold, the report was approved.

CORRESPONDENCE/COMMUNICATIONS: Statement received from ECE (auto paid). \$62.00 has been received which is yet to be deposited--Dues (\$40) and advance 2017 Calendar orders (\$24). This sum does not include dues received at this December meeting.

OLD BUSINESS:**COMMITTEE REPORTS:**

DAVIDSON WINDMILL/ESKOLIN HOUSE/TAYLOR'S BRIDGE: Brian reported that further work on the bridge project will be delayed until spring. Jim has finished painting the windmill blades. Thanks to Patricia Hursh for donating her time to complete the barrel and storage shed door project (painting).

Ron Hendrickson mowed the grass at the end of the season, prior to the Apple Festival weekend.

MSMA CONSTRUCTION: Jim reported that, because our contractor could not get our project done by this time, it was too late to be a safe project at this time, as far as the strength of the concrete is concerned. It should be a fast start next spring. Olson Brothers will do the digging. Thanks to Dennis for working with Kevin Mackie. We will be asking for a written bid with a starting date by approximately May 15th when road limits are lifted, and a specific date of completion by July 1, 2017.

Electricity installation is on hold. Some paperwork is done, but more needs to be completed when we have firm dates.

Dennis noted that there have been some changes made to the plans, including a longer vault and limiting the wall Styrofoam to the interior of the building only, where it is exposed. This change should lower the cost slightly.

The basement will be separate from the main floor. Archives will be stored on the north side. Decisions need to be made regarding insulating the inside of the vault.

MERCHANDISE: Our two copies of *Looking Back at Lake Owen*, which Nan Wisherd provided to us at \$40.00 (retail price of \$70.00), have now been sold on EBay (and to Janine Seis).

Jim and Nan have decided to put additional effort into their calendar book, perfecting the text with further research and work. Laila Magnuson recently discovered some valuable information from an 1893 Annual Edition of the *Ashland Daily Press* that will be included in the book. Jim said the Old-Brule region and group will gain identity from their calendar book and also noted the inclusion of many maps. Nan and Jim will continue this work after Nan's tax season is completed in May. Independent research will continue in the meantime.

FRIENDS OF OBHS FACEBOOK GROUP SITE: Thanks to Janine and Nancy Moreland for their maintenance of this independent site with over 600 members. It is critical that we obtain posted photo sources in order to extract information with needed resolution and to get permission for their use.

PROPOSAL TO INVOLVE LOCAL STUDENTS IN A DRAWING/PAINTING OF THE DAVIDSON WINDMILL COMPETITION: The project is now in the hands of the Maple School District's Art Department and Charlie Hessel, Art Teacher, who will respond to our committee.

OPT OUT OF NEWSLETTER HARDCOPY DELIVERY: Members are reminded that, if they are interested in an online electronic copy of the *OBHS News* in lieu of or in addition to a hard copy, to contact Jim.

REFRIGERATION DONATION: Ron reported that, unfortunately, Shirley's planned donation of a larger refrigerator for the Eskolin House is not practical. The door access is not sufficiently large.

MEMBERSHIP DATES: Members are asked to verify their mailing address on *OBHS News* for correctness of membership date. Please contact Jim with any questions.

NEW BUSINESS:

SYMPATHY AND ENCOURAGEMENT: Encouragement to Doris Perala.

NEXT BOARD MEETING: The meeting (pot-luck supper) will be held on January 11, 2017 at 5:00, at Hope Swenson's residence.

NEXT GENERAL MEETING: The next General Meeting will be on Wednesday, February 8, at 6:00 p.m. Jim will check if the Maple Town Hall will be available for our use.

OTHER NEW BUSINESS:

UPCOMING POTENTIAL MSMA FUND RAISERS:

(1) **Music/Food/Entertainment at the Kro Bar:** Feedback from last year's event at the Kro Bar was very productive. The Board discussed potential dates for another similar event, and decided that the earliest we could hold one would be in February. Two potential dates were suggested: Friday, February 17, 2017 and Friday, February 24, 2017. Arrangements would need to be made with Kro Bar and the musicians. While last year's Chinese Auction was successful, it took much time and effort for members to set up. A 50-50 Raffle Fundraiser, with proceeds split between the winner and OBHS, was approved by a show of hands. Doreen noted that the snow-mobile crowd might be drawn by the music and food.

Jim moved that we hold this winter event at a date between February 15 and March 15th. Audrey seconded the motion. Motion carried. A committee will be formed to make the final decision as to date and to begin planning. Jim will contact Kro Bar and the musicians.

(2) **Flea Market/Bazaar:** Positive feedback has been received from the community and from last year's vendors about our flea market held last August at the Maple Town Hall for MSMA. Mary Ann made a motion, seconded by Jim, to proceed with plans for a similar event to be held in August of 2017. Motion carried. August 26, 2017 would be a similar date (4th weekend in August) to that of our August 2016 event. Jim will contact the Town of Maple for date.

ADJOURNMENT: Doreen moved to adjourn the meeting; motion was seconded by Stanley Jacob. 1st Vice-President Dennis Hill adjourned the meeting at 9:05 p.m.

Following the meeting, those in attendance enjoyed a holiday gift exchange.

Respectfully submitted,
Lila Ronn, Secretary

FUND-RAISING MERCHANDISE FOR SALE

The Society has available regional history magnets, plus Davidson Windmill memorabilia: mugs, caps, tee shirts, sweat shirts, key chains, buttons and photos for sale. Early issue magnets are going for \$1 each, or 6 for \$5.00, proceeds to our General fund. Windmill mugs, caps & tee shirt proceeds go into the Windmill Fund. **SEE OUR WEB SITE** (www.oldbrule.org) **FOR CURRENT SALE ITEMS AND PRICES.** Our Windmill vests are for sale for \$24.00. Our new zipper front hooded *I've Been Through the Mill* sweatshirts have arrived.

Our book, *Wisconsin Far Northwest*, and Nan Wisherd's books, *Pathways* and *Echoes*, Lakeside's *Sisu and Sauna, (Out for now)* and *Amnicon From the Beginning*, are available for \$20.00 a copy + \$3.50 shipping. Wisconsin sales tax is included in all of our prices. Shipping and handling for mugs, caps and tee shirts is a \$4.00 minimum. All items are also available for purchase at our meetings or by contacting an OBHS member. Our booklet, *Davidson Windmill History* by Jim Pellman and Gene Davidson is available for \$8.00 (+\$2.00 shipping). Leigh P. & Richard Jerrard's new expanded and revised edition of *The Brule River of Wisconsin* is now available at \$20.00 (+\$3.50 shipping). See our calendar ad above. Jane Pearson Grimsrud has released small and large print versions of *Brule River Forest and Lake Superior Cloverland Anecdotes*. Both are available for \$20.00 (+\$3.50 shipping). Poplar Hardware also has an inventory of most of our titles. Please check ahead for current availability. Also please contact our members for more info.

OLD-BRULE HERITAGE SOCIETY, INC

Unapproved MINUTES of the JANUARY BOARD MEETING

Wednesday, January 11, 2017, Residence of Hope Swenson, Town of Lakeside,

Attendance: Dan Bergsten, Dorothy Bergsten, Mary Ann Gronquist, Dennis Hill, Matt Miller, Jim Pellman, Lila Ronn, Hope Swenson, and member Arlene Hill. Doreen called and could not attend due to passing of Doris. The group enjoyed a pot luck lunch before starting the meeting. Thanks to all for sharing and to Hope for hosting.

BUSINESS MEETING:

CALL TO ORDEER: 1st Vice-President Dennis Hill called the meeting to order at 6:05 p.m.

MINUTES: Mary Ann moved to accept the minutes of the November Board meeting which were published in the December 2016 *OBHS News*. Dan seconded the motion; the minutes were approved.

TREASURER'S REPORT: Assistant Treasurer Matt Miller reviewed the report Treasurer Janine Seis had submitted via email on 01/11/16:

CURRENT BALANCE	CHANGES SINCE DECEMBER GENERAL MEETING
CD: \$ 5,838.25	No change
CASH \$ 31.00	(Error on last report stating it was \$30)
WINDMILL: \$ 2,415.77	Last report - \$ 2,445.18 (Debit of \$29.41 for the ECE Electric Bill)
MSMA: \$ 16,622.17	No change from last report (Outstanding Check #1024 for \$30 application fee to Dahlberg Electric)
GENERAL: \$2,238.95	Last report - \$1,569.45 (Additions: \$752 includes calendar sales, book sales & memberships. Subtraction: \$82.50 for 10 Jane Grimsrud's Brule River books.) The bill for calendars (over \$900) has not been received yet.
TOTAL CASH ASSETS: \$ 27,146.14	Last report - \$ 26,506.05

Jim P. deposited \$290.00 on 01/12/16 in the General Fund (membership renewals, donations, & calendar sales). Laila M. has collected money from calendar sales which will be turned in when her health permits. These above additions will be included in next month's report. Janine is working on the State Sales Tax report which is due by the end of the month.

Dorothy made a motion to approve the report as presented. Following a second by Dan, the Treasurer's report was accepted.

CORRESPONDENCE/COMMUNICATIONS: Statement received from ECE (auto-paid); calendar orders, donations, & memberships; Wisconsin Historical Society reminder to submit Annual Report and to submit a Federal 990 Form.

OLD BUSINESS:**COMMITTEE REPORTS:**

DAVIDSON WINDMILL/ESKOLIN HOUSE/TAYLOR'S BRIDGE: No action is planned until spring.

MSMA Construction: Basement project moved to early summer 2017 when we expect a fast start. Olson Brothers will do the digging. Thanks to Dennis for working with Kevin Mackie. A written bid will need to be obtained with a starting date by approximately May 15th (determined when road limits are lifted) and a specific date of completion by July 1, 2017. Some of the paper work required for electric power installation has been completed, with more to be done when firm dates are determined. Dennis noted some changes to the plan, including a longer vault, and limiting the wall Styrofoam to the interior of the building only, except for the exterior of the vault which will not be exposed. These changes should reflect a small decrease in total cost.

MERCHANDISE (BOOKS): OBHS had two copies of *Looking Back at Lake Owen* for purchase. Nan Wisherd provided these books at \$40 each (retail price is \$70.00). Janine sold one on EBay for \$49.99; Jim paid for a third at cost.

Jim and Nan have decided to put additional effort into the calendar book. They will continue their further research and work after Nan's tax season commitment is completed in May. Independent research will continue in the meantime.

Ten copies of Jane Grimsrud's book *Brule River Forest* have been received with several spoken for..

FRIENDS OF OBHS FACEBOOK GROUP SITE: Thanks to Janine and Nancy Moreland for their maintenance of this independent site with 613 members to date. It is critical that we obtain posted photo sources in order to extract information with needed resolution and to get permission for their use.

PROPOSAL TO INVOLVE LOCAL STUDENTS IN A DRAWING/PAINTING OF THE DAVIDSON WINDMILL COMPETITION: The project is now in the hands of the Maple School District's Art Department and Charlie Hessel, art teacher, who will respond to our committee. Pictures were taken at the mill, and of Paul Hakkila's Windmill painting which he finished last fall for our group and shared with his classroom students as inspiration.

OPT OUT OF NEWSLETTER HARDCOPY DELIVERY: Persons interested in accessing an online electronic copy of the *OBHS News* in lieu of or in addition to a hard copy should contact Jim.

REFRIGERATOR DONATION: In order to move the refrigerator Shirley has donated for use at the Eskolin House, a solution to get this larger unit into place needs to be determined.

MEMBERSHIP DATES: Members are asked to verify their mailing address on *OBHS News* for correctness of membership date. Please contact Jim if you have questions. Jim requests that members keep up with their volunteer hours on the "blue sheets".

NEW BUSINESS:

SYMPATHY AND ENCOURAGEMENT: Sympathy to the family of Doris Perala who passed away on January 10th. Dave Thorson, who conducted a “Down to Earth” tour of the area for our organization several years ago, also passed away recently. Encouragement to Laila Magnuson as she experiences health issues.

NEXT BOARD MEETING: 5:00 p.m. on Wednesday, March 8, 2017, at the residence of Dennis & Arlene Hill.

NEXT GENERAL MEETING: The General Meeting will be held on Wednesday, February 8th at 6:00 p.m. at the Maple Town Hall, beginning with a pot luck dinner. Please bring a food item to share. Dennis will lead the program “Layers of our History”. Participation of all members will be encouraged.

UPCOMING MSMA FUND RAISERS:

- (1.) Music/Food /Entertainment at the Kro Bar. Feedback from last year’s event was very positive. At the December General Meeting the consensus of the group was to hold a musical/food benefit later in February or in March. Jim has received a positive reaction from Ted Pellman who has been in contact with volunteer musicians. Jim will coordinate the event with Dean Baillie at KroBar. While last year’s Chinese Auction was successful, it took much time and effort from members to set up. Tentative plans include having a 50-50 Raffle Fundraiser (proceeds being split between the winner and OBHS), along with some larger prizes. The planning committee will include all Board members and other members of last year’s committee who are available. Volunteers are welcome!
- (2.) Flea Market/Bazaar: August 26, 2017 would be a similar date (4th weekend in August) to that of our August 2016 event. Jim has received a favorable response from the Town of Maple.

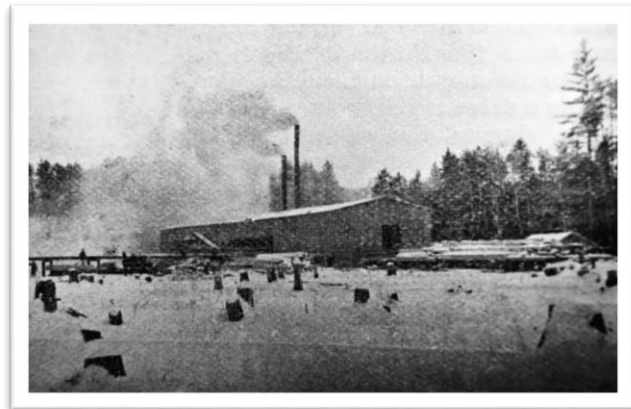
ADJOURNMENT: Dan made a motion to adjourn the meeting, which was seconded by Dorothy. 1st Vice-President Dennis Hill adjourned the meeting at 7:32 p.m.

Respectfully submitted,
Lila Ronn, Secretary

Area History: No. 114
--

This picture and text appears for the month of February in our 2017 OBHS Historical Calendar.

17-02. The Brule Lumber Company Sawmill near Downtown Brule in 1893. As early as January 31, 1885 the *Bayfield County Press* reported that R. B. McLean, Chairman of the Douglas County Board of Supervisors, had come in on the Northern Pacific Railroad with news “that parties [such as Hiram Sibley] owning a large tract of pine on the Brule River proposed erecting a large sawmill on that stream where it is crossed by the railroad.” Life had picked up at this point on the river once the railroad was built through from Superior to Ashland in 1884. Nathaniel Crockett from Elk River, Minnesota, had soon put up a large general store made of logs south of the NP’s tracks. But things changed quite radically when the Brule Lumber Company began to seriously invest in 1892 in its sawmill site near other property it acquired under the name Brule Land and Improvement Company, in what would become downtown Brule at its present site north of the NP tracks. In this picture it is believed that we are looking southwest at a location near the fork of the Brule and the Little Brule rivers. The mill was running by 1893 and by late 1896 it was sold to the La Crosse Lumber Company of La Crosse, Wisconsin. La Crosse in turn would sell to Warren E. McCord who in 1898 would sell his timber rights locally and his West Superior Mill to Edward Hines. In 1891 Frederick Weyerhaeuser had moved into the region with his railroad and spurs, and his huge purchase of the Omaha Railroad land grant of almost every other (odd numbered) section in northern Douglas County, nearly 70 full sections. By 1907 near the closing of his Nebagamon Lumber Company mill, his own 4,320 acre Brule valley land grant to the State of Wisconsin, conditioned upon removal of all Brule River dams, effectively ended all industrial use of the Brule River to the present. *Picture from Ashland Daily Press Annual Edition 1893.*



~ NOTICES ~

MEMBERS: Dues collection for 2017 began at our Annual Meeting in August & continues into 2017. Please keep filling in your volunteer hours on your Blue Sheets. Our next hour tally runs annually from August 1 (2016) to turn-in-date July 31 (2017). Please contact our Secretary or Jim for a new Blue Sheet, or check for blank forms on our website.

THANK YOUS & RECOGNITIONS: Thanks to the many who donated to the MSMA Project in Memory of Member Doris Perala who passed away (see our obituary summary below). Thanks to all who have paid their 2017 dues. We greatly appreciate this vote of confidence in our work.

OUR ENCOURAGEMENT & SYMPATHY: To family & friends of the many, listed here, whom we have lost recently:

Doris E. (Anttila) Perala, 85, of Maple, who passed away at Villa Marina in Superior on January 10, 2017, born in 1931 to Hugo and Ellen (Koivu) Anttila of Maple, attended Maple Corner School & graduated from Central High School in Superior in 1949, worked in Douglas County Clerk Arnie Anderson's office for 15 years, paying all the county bills despite being handicapped with full use of only her left hand, married Arnold Perala in 1970 who preceded her in death Christmas Eve in 2008, survived by brother John (Peggy) Anttila & sister Doreen (John) Swanson.

Kerry E. (Griest) Drew, 84, of Maple, who passed away January 28 after a difficult illness, born in 1932? in Watertown, S.D. to William and Manzanita Griest, and lived in Buffalo, N.Y., Springfield, Ill., Vista, Calif., White Bear Lake & Minneapolis, Minn. before settling in Maple, had a long varied career including work at the Maple Telephone Cooperative until its sale in 1994, retiring from her accounting & home income tax business in 2013, survived by children, Gaye (Bob) Erkel, Thomas (Renee) Schmidt, Christopher Schmidt, all of Maple, and Bonnie Rae Jaminski of Circle Pines, Minnesota.

Albert R. Williams, Jr., 73, Lake Nebagamon, who died Jan. 20, at St. Mary's Medical Center, born in 1943 in Superior the eldest child of Albert Sr. and Verna Williams, spent his childhood in Maple and attended Northwestern High School. In July of 1960 he enlisted in the Navy serving in the Pacific Fleet including Vietnam, retiring from the Navy in 1989, survived by wife Blandina, & his children, Ardie (Brad Buechner), Belinda, sister Irma (Eugene) Cooper, brothers, Tom (Patricia), & Roger (Roxy) Williams.

Patricia K. Johnson, 76, Lake Nebagamon, who died Jan. 20 in St. Luke's Hospital, Duluth, born in 1940 in Duluth to Carl and Aina (Hanson) Johnson, grew up on the family farm in Lakeside, Wis., graduated from the Northwestern High School class of 1958, married Frederick Johnson in 1958, in Carlton, Minn. and they celebrated 58 years of marriage before his passing in 2016, co-owned and operated the Norwood Golf Course with her husband Fred for many years and was employed with the Carlson Group and worked as a cook at Minnesuing Acres, survived by son, Terry Johnson, Superior; daughters, Lou Ann (Jeff) Erickson, Andover, Minn. and Brenda (Mark) Anderson, South Range, Wis., brother Wesley (Karen) Johnson, Lakeside, Wis.

Kathy J. Peterson, 59, who passed away Dec. 1, 2016 in Tombstone, Ariz., born in 1957 at Dyess Air Force Base in Abilene, Texas to Carl E. Peterson, Jr. and Alice M. Peterson (Faye), following the death of her father, she moved to Superior with her family to settle in the Itasca neighborhood in the summer of 1960, graduated from Superior Senior High School in 1977 and from Superior Indianhead Technical Institutes mechanical drafting program, worked for the BN Railroad as a switchman and worked for 13 years ending her career as an engineer, married Bill Smith in 1988 and moved to Poplar after buying their first home, moved to Tombstone, Ariz. in 2008, having worked there at the OK Corral.

Kyle S. Androsky, 21, who died unexpectedly Jan. 1, 2017, in Superior, born in Duluth in 1995, the son of David Androsky Sr. and Terri Hill, a 2013 graduate from Superior High School. He had worked at Core Landscaping for many years and recently was a package handler at Fed Ex.

Gayle V. Johnson, 82, Brule area resident, who died Dec. 29, 2016, at St. Luke's Hospital, Hospice Unit, Duluth, survived by husband Ronald C. Johnson.

Beatrice J. (Brannan) Nordrum, 84, Superior, who died Dec. 29, 2016, at Solvay Hospice House in Duluth, born in Rockmont, Wis., in 1932, the daughter of Joseph and Bessie Brannan, worked at Parkland Health Facility for 20 years and at St. Francis Nursing Home South for two years, preceded in death by her parents & husband, Morris.

Frank John Koenen, 84, South Range, who died Dec. 22, 2016, at his residence, born in South Range in 1931, son of Harm and Jessie Koenen, a carpenter at Lakehead Contractors Inc. and J.R. Jensen Construction.

Duane M. Beschta, 80, Lake Nebagamon, who died Dec. 17, 2016 at Solvay Hospice House in Duluth, born in 1936 in Dale, Wis. to Vernon and Eleanor (Armitage) Beschta., married Judy Hietala of Poplar in 1974, served in the US Air Force for 20 years retiring in June 30, 1974 as a Major, moved to Bennett where he worked for the Solon Springs School District as a bus driver retiring 1996, wife Judy and six children survive.

Dan Newell, 80, Brule, who passed away Dec. 11, 2016 at his home, born in Superior in 1936 to Dwight & Elizabeth (Brownell) Newell, 1954 graduate of Superior Central HS, Army veteran, in 1958 he married Darlene Weber, worked many years in retail positions, retiring from Poplar Hardware in 1998, survived by his wife & daughter Monika (George) Martin.

Michael J. Wiisanen, 56, Superior, who died Dec. 10, 2016 at his residence after an illness, born in 1960 the son of Harry and Marilyn Wiisanen, sailed on the Great Lakes, preceded in death by his parents, survived by daughters, brothers, Russell (Rose) of North Bay, Ontario, Thomas (Nancy Rantala) of Poplar & Jerry (Brenda) Wiisanen of Superior.

Harold M. Hanson, 87, Lakeside, Wis., who died Dec. 6, 2016 at Middle River Health & Rehab. Center in Hawthorne, was born in 1929 in Superior to Herman and Mabel (Byhre) Hanson, owner/operator of his family beef cattle farm in Lakeside, retired as a conductor for the Burlington Northern Santa Fe Railroad after 45 years, also sailed on the Great Lakes, had a logging business, was a commercial fisherman and a civilian employee for the government, preceded in death by his wife Eloyce Hanson, survived by his longtime friend and companion, Miina Helske; two sons four grandchildren & seven great-grandchildren.

And who have we missed or forgotten? May they all rest in peace.

RETURN ADDRESS:**OLD-BRULE HERITAGE SOCIETY, INC.**

4808 S. County Road F, Post Office Box 24
Maple, WI 54854

Anyone interested in joining the Old-Brule Heritage Society is encouraged to attend any of our meetings and programs. To join they may also contact any member or the Board at the return address above, or our Treasurer, Janine Seis, at the same address. Our annual dues are \$15.00 for individuals, and \$25.00 for families, payable after our annual meeting in August. Higher levels of support are always welcome.

New Members and Visitors are Always WELCOME!

CALENDAR.

February 6, Monday 1 PM. Next OBHS Archives Committee Meeting at Pellmans'. Please call to confirm.
February 8, Wednesday 6 PM. OBHS General Meeting. Maple Town Hall. Pot luck lunch followed by Dennis Hill's talk on The Mind Sets in the Layers of History. Business meeting to follow.
February 12, Sunday. Abraham Lincoln's Birthday.
February 14, Tuesday. Valentine's Day.
February 20, Monday. Presidents' Day.
February 22, Wednesday. George Washington's Birthday.
March 1, Wednesday. Ash Wednesday.
March 8, Wednesday. OBHS Board Meeting. Residence of Arlene and Dennis Hill in Amnicon.
March 12, Sunday. Daylight Saving Time begins.
March 16, Thursday. St. Urho's Day.
March 17, Friday. St. Patrick's Day. Submissions for the April *OBHS News* are due.
March 20, Monday. Spring begins.
April 16, Sunday. Easter Sunday.

OLD-BRULE HERITAGE SOCIETY WEB SITE ON LINE

The Website Committee has been maintaining our Web site (www.oldbrule.org). **Earl Granroth** continues to make regular updates, and **Jon Winter** of **Winter Systems** in **Superior** is our Web host at no charge to us.

Thanks again to Earl G. and Jon W.