

OBHS News

Volume VIII, Issue 3

June 5, 2006

Newsletter of the Old-Brule Heritage Society, Inc. ©2006

Founded in 1998 to Preserve and Share the Heritage of the Old-Brule Region.

BOARD OF DIRECTORS

Paul Colby, Lakeside, President
Earl Granroth, Lakeside, 1st V.P.
Harry Wester, Bennett, 2nd V. P.
Mary Ann Gronquist, South Range, Sec.

Shirley Kankas-Rouleau, Lake
Nebagamon, Treasurer
Robert Aho, Duluth
Alice Christensen, Amnicon
Marion Christensen, Superior

Karin Colby, Maple
Hope Swenson, Lakeside
Paul Williams, Lakeside
Irene Parenteau, Superior, Alternate
Jim Pellman, Maple, Emeritus

NEXT REGULAR MEETING/PROGRAM

WED., JUNE 21ST, 6:00 P. M., AT THE LAKESIDE TOWN HALL.

OUR BUSINESS MEETING WILL BE HELD FIRST FOLLOWED BY A WORK SESSION IN PREPARATION OF OUR MIDSUMMER CELEBRATION. EXHIBITS ON THE TOWNS AND VILLAGES WITHIN THE OLD BRULE REGION WILL BE ASSEMBLED, OR WILL BE UPDATED.

EVERYONE IS WELCOME! PLEASE BRING A FRIEND.

**Thanks to the Town of Lakeside for the use of their facility,
and to all who bring refreshments to share (to be served between the business meeting and the work session).**

FROM THE PRESIDENT:

Greetings to All,

I hope all is well with everyone, and for those with burdens, may your outcomes be direct, positive, and personally expanding.

What a bizarre spring near the big Lake, but with the weather finally cooperating, our group is lining up the troops to begin attacking the house project. Our goal is to have the house resting on the foundation with the roof up and tar papered by our mid-summer celebration on June 24th. Please keep in mind this is a goal. We'll do our best with our much appreciated volunteers who donate their valuable time, knowledge and skills. Tim Johnson is working to produce the bottom black ash timbers that will replace rotted originals. Isaksson's Lumber in Herbster has been contacted for the replacement rough sawn pine for the roof. The Panks and the Tutors have done much in preparation for the cedar shingling.

Speaking of valuable volunteers, I've learned Harry Wester is working to put all the old railroads on all the town plat maps he has made for all of rural Douglas County. Also Audrey Hakkila was down into Appleton for the Coalition of Wisconsin Aging Groups convention. Jim Pellman has been busy heading the archives group and he's working on the book for Maple's 2007 Centennial. Alice Christensen is the leader of our gifted ladies who have been planning for our Midsummer Festival and Scandinavian feed at the Lakeside town hall. One of our members, Gertrude Davis, donated a copy of the book she published on the community of Berg Park. Hazel Salo has donated a nice collection of Finnish books and periodicals. James Walsh has donated bylaws of the Riverside Community Club plus historical pictures of Lakeside.

Our Lakeside Book Committee is still diligently working on the centennial book. We've received great pictures and factual data that will be assets to our town's brief history book. Jeannie Castleberry from Castleberry Press has been formatting the book and will be relaying it to the printer by early July. Also Lori Madden has added a chapter to our project from her future book about her ancestor, Chief Joseph Osaugie, and the Ojibway bands that resided in and defended the area now known as the Town of Lakeside.

The farmers have been very busy planting all their crops. I've heard one is even planting soybeans. Once again their corn fields have helped the deer, and there's an abundance of them again this year, so the hunt will be good. Even though wolf numbers are up, and neighbors have been seeing bobcats, I'm hoping these predators will turn to the surplus of rabbits instead of fawns.

Russell and Marlys Tuura are busy creating new natural designs for the season for their business near the windmill.

I recently saw our great fire department looking for volunteers by the windmill during their "Be someone" campaign.

Kyle and Shelly Torvinen are coaching the Lakeside/Maple minor league team. Kyle, a lawyer with Knudson, Gee and Torvinen, has kindly donated nice shirts and hats for the team and coaches.

David Maki, from Archaeo-Physics has begun his work on the Henry Knuuttila homestead (1885). I, Jim Pellman, and David's father helped recently with his magnetometer scans. He plans to conduct another survey in July and report his findings to the University of Turku, Finland. He's eager to start on other homesteads of interest when he's not in Yemen—or who knows where. We were distracted from our work when a just born fawn bonded to David.

Denise Kurki of Signbridge Language Systems has returned from lobbying in Washington D.C. last month. She was there raising awareness of her innovative teaching method of foreign language vocabulary to young children through sign language. Unfortunately in Minnesota, the bill to teach her learning method was thrown out at the last minute in the omnibus hearings; though this was a bonding year she may have better luck next year during the funding year.

Speaking about education, there's a lot of hype about the school referendum. I've been gathering my facts and still have some questions. I'm sitting on the fence at the moment, though in the core math controversy I am leaning. I feel my daughter has been presented with some misleading facts by certain teachers. I've explained to her how the voting process works and talked to her about how politics works. I explained to her about the big spending that has been going on. I showed her how to gather, write out, and prioritize all the facts in the question, and explained that we are not voting on just one issue, but on an overall matrix of issues. Though it has caused division in our home once again, my daughter has now seen and heard all sides of the issue.

Enjoy the summer with family, loved ones and friends.

Yours truly,

Paul

p.s. I've been extremely busy at work with the new ultra low sulfur diesel mandate. The diesel and fuel oils will be under 15 ppm of sulfur in on road diesels.

p.s.s. I've decided to offer Murphy Oil some of our land, if needed, for their wetland exchange if they move forward with their rumored expansion project.

FROM THE EDITOR:

This August Old-Brule Heritage Society will hold its annual meeting, for the first time, in the month of August. That time will come quickly. At that session we will have the difficult task of replacing Paul Colby who has served us faithfully as President, with tremendous energy, for the past three years. With his second two year board term ending Paul will, as part of our normal routine, leave the board (for at least a year) to return full time to raising his family, and to facing the challenge of his job in the petroleum transportation industry which is presently under great stress and change. The Wrenshall facility where Paul works is coming under new ownership and this adds to the duties of his already hectic routine.

At the same session second terms will expire for three other figures extremely important to the success and smooth functioning of our group: that of our Secretary, Mary Ann Gronquist, of our Treasurer, Shirley Kankas-Rouleau, and of Board Member and Windmill Committee member, Robert Aho. All of these talented people will be impossible to fully replace. Please be thinking of capable replacements for each of these positions. Our only pay has been the deep satisfaction felt in serving the mission of our group. Although they have some time left it is not too soon to say thank you to all of them for the service they've rendered.

-Jim Pellman

NEW! 2006 OLD-BRULE HISTORY PHOTO CALENDAR NOW AVAILABLE.

The Brule History Research Group, organized in 1995, produced its eighth and final calendar in 2005 with more pictures of Brule's past. Proceeds of these annual calendar sales since 1998, when the first one was produced, are being used for the publication of the history of Brule, hopefully to be completed soon. Limited numbers of the 2005 calendar and earlier issues are still available. To order any of these calendars by mail, please write or call Janet Follis, P. O. Box 114, Brule, WI 54820 (715) 372-4948.

Continuing the BHRG calendar tradition, the first *Old-Brule Heritage Society History Photo Calendar* is now available in limited numbers. 400 copies have been published and they are available this year only for \$5.00 from O-BHS members or at limited local business outlets. An e-mail address for more info: musketeer6@cheqnet.net, and phone: 715-363-2549.

OPINIONS EXPRESSED IN THE *O-BHS NEWS* ARE THOSE OF THE WRITERS ALONE AND ARE NOT INTENDED TO REPRESENT OFFICIAL POSITIONS OF THE O-BHS ORGANIZATION.

ARCHIVES/COLLECTIONS COMMITTEE.

The Archives Committee would welcome other volunteers to help us in this important part of the O-BHS mission. Our current project is learning to use the computer in support of our work, scanning documents and photos, storing records and creating data bases. Our thanks to our loyal committee members and contributors, and to the Town of Maple for archive space. If you enjoy exacting work please join us at 1 p.m. at the Pellmans' some Monday afternoon. Next meeting: June 19th, 2006. Please call 363-2549 to confirm meeting time and place.

**(UNAPPROVED) MINUTES, REGULAR MEETING
OLD-BRULE HERITAGE SOCIETY, INC.
APRIL 12, 2006, AMNICON TOWN HALL**

Attendance: 31 members and guests

Time: 6:15 p.m.

CALL TO ORDER: The meeting was called to order by Paul Colby. An interesting program on logging in Douglas County was presented by Scott Nielsen, followed by lunch provided by members.

BUSINESS MEETING: 8:00 p.m.

MINUTES: A motion to approve the minutes of the February 22, 2006 meeting as printed was made by Audrey Hakkila, seconded by Janine Seis. Motion carried.

FINANCIAL REPORT: March 9, 2006 to April 12, 2006

INCOME;		EXPENSES:	
Interest	\$ 7.35	Newsletter postage	178.51
Dues	25.00	TOTAL EXPENSES	\$ 178.51
Merchandise sales	30.00		
Book sales	30.00		
Calendar ads	1045.00		
Calendars sold (18)	117.00		
Anonymous donation	500.00	(to be donated to L. Nebagamon Centennial in the name of O-BHS)	
TOTAL INCOME:	\$ 1724.32		
Checking Account Balance	\$ 4053.62		
Mill Fund Balance	\$10450.46		

The treasurer reported that she is doing on-line banking now. There was a discussion on investing some of our money in money market or CDs. A motion to accept the treasurer's report was made by Earl Granroth, seconded by Alice Christensen. Motion carried.

OLD BUSINESS:

DAVIDSON MILL: Paul Colby reported that the log house is now on the Windmill site, moved by the Grubes. Scott Essen will make the lean-to slab for \$600. He will donate the apron slab. Tim Johnson will get logs from Paul's place and saw them for \$250.00 and deliver them to the mill. Harry Wester said that Guy Clemmer offered the use of his mill in Hawthorne also. The Windmill Committee will make the decision. A new roof is needed also. The rafters are okay. Lumber will be needed for the roof, and doors and windows will be needed. There is still some money in the landscaping fund that is not used. Paul is attempting to get another grant from ConocoPhillips.

ARCHIVES CTTE. The committee meets every other Monday at the Pellman home. The committee has completed scanning an album of historical pictures gathered by the Maple Volunteer Fire Department and their fire department history volume. They are working on records from the Brule Co-op Park. More volunteers needed, especially typists. Next meeting April 24 at 1:00 p.m.

WEBSITE: Jon Winter has received the Microsoft software at no cost. A training session is needed to learn the procedures for updating the Website.

PUBLICATIONS: The 2006 calendars are now available for \$5.00. The cost of printing was covered by the advertisers. 475 were printed, at a cost of \$2.15 each. The wholesale price to businesses willing to sell them is \$4.00. Some are already distributed for sale. Free copies are being given to the advertisers. Audrey will put an article about the calendars in the papers, with Jim and Shirley as contact people. They will also be advertised in our newsletter. 540 *Far Northwest* books have been sold. Beecroft bought another 12 copies. The Little Gift House in Solon Springs has some copies too. The Lakeside History book titled "Sisu and Sauna" will be ready by August 19 for their centennial, at a cost of \$20. The ISBN bar code cost is \$25.00.

MEMBERSHIP: There are 128 members at present.

MIDSUMMER EVENTS: Signs for the dinner were discussed. One double sided sign was decided on. A motion to have no limit on the cost was made by Harry Wester, seconded by Janine Seis. Motion carried. Alice is making the arrangements for the sign. She will set a meeting of the committee for the dinner.

NEW BUSINESS:

NEXT MEETING: The next Board meeting will be at the Harry Wester home at 6:00 p.m. on May 10. The next regular meeting will be at the Lakeside Town Hall on Wed., June 21. There will be no speaker as this will be a Midsummer event workshop. Paul Colby asked if anyone knows the whereabouts of the Town of Highland display used at the dinner last year.

CENTENNIAL FARMS & HOMES: Forms are available from Jim Pellman.

OTHER: Recognition was given to the Grubes, who were present, for the moving of the log house, and to Kathy Kindel for the donation of the prints of the windmill done by her father Lloyd Kindel. Dr. Ron Mershart was presented with a windmill sweatshirt in the correct size. The Windmill Committee will meet at Alice Christensen's, date not decided.

ADJOURNMENT: Motion by Marilyn Pank, seconded by Bob Aho. Motion carried.

Respectfully submitted,
Mary Ann Gronquist

FUND-RAISING MERCHANDISE FOR SALE

The Society has available regional history magnets, plus Davidson Windmill memorabilia: mugs, caps and tee shirts and sweat shirts for sale. Magnets are going for \$1 each or 6 for \$5.00, proceeds to our general fund. The Windmill mugs are \$8.00, caps, \$9.00, and tee shirts, any size, \$10, all proceeds going into the Windmill Fund. Sweat shirts, any size are \$25.00, taxes included.

Available also are copies of a David Noah Seis photograph of the mill for sale. This image comes in three sizes: 4 by 5 inches, 5 by 7 inches, and 8 ½ by 11 inches. The smaller reproductions can also be used as post cards as each has a brief historical description on half of its reverse side. Prices are \$1.00, \$2.00 and the largest one which has no printing on it \$3.00. All are laser reproductions on card stock suitable for framing. This same image is available in our magnet series.

Our book, *Wisconsin Far Northwest*, and Nan Wisherd's *Pathways* and *Echoes* are available for \$20.00 a copy + \$3.00 shipping. Wisconsin tax is included in all our prices. Shipping and handling for mugs, caps and tee shirts is a \$4.00 minimum. All items are available for purchase at our meetings or by contacting an O-BHS member.

(UNAPPROVED) MINUTES, BOARD MEETING

OLD-BRULE HERITAGE SOCIETY

MAY 10, 2006, WESTER HOME, BENNETT

Present: Jim Pellman, Earl Granroth, Barbra Granroth, Hope Swenson, Alice Christensen, Harry Wester, Mary Wester, Karin Colby, Irene Parenteau, Paul Williams, Eddie Walman and Mary Ann Gronquist.

WELCOME:

BUSINESS MEETING: Meeting called to order at 6:35 p.m. by Earl Granroth.

A. MINUTES. A motion to approve the minutes of the Mar. 8, 2006 Board meeting as printed was made by Jim Pellman, seconded by Alice Christensen. Motion carried.

B. FINANCIAL REPORT (April 13 to May 10, 2006), by written report presented by Jim Pellman from our vacationing treasurer.

INCOME:

Dues	\$ 40.00
Interest	7.51
MDSE	30.00
TOTAL INCOME:	\$ 77.51

EXPENSES:

Sunshine Flowers, card	\$ 21.49
Scott Nielsen, speaker	25.00
Pat Grube, house moving	700.00
Arrowhead Printing	1040.23
475 calendars (75 free)	
TOTAL EXPENSES:	\$1786.63

BALANCES:

Checking Acct.	\$2612.40
Windmill Acct.	\$10456.56

The current rate for a six month CD is 4%. There was a discussion about putting some money into a money market account. A motion was made by Hope Swenson, seconded by Alice Christensen to put up to \$10,000 in a money market account. Motion carried. Insurance on the mill site is due. The cabin being on the grounds will not change the premium. Alice moved to pay the premium of \$429.00, seconded by Jim Pellman. Motion carried. Jim reported additional sales of books and calendars via mail. He negotiated a sale of *Wisconsin, Far Northwest* books at \$14 each wholesale to the gift shop at the Great Lakes Visitor Center at Ashland. A motion to accept this contract was made by Harry Wester, seconded by Alice Christensen. Motion carried. He received a check for \$70.00 from the shop. Jim has ordered and received from Nan Wisherd 12 (actually 13, one free) copies of her book *Echoes of the Past* @ a 40% discount. The bill is \$143.64 and will be paid by our treasurer.

C. OLD BUSINESS:

1. DAVIDSON MILL: The log house has now been moved by the Grubes. Paul Colby has planned to get some caution tape. Hope Swenson mentioned that she may have some orange fencing that she

would loan for use there for safety purposes. Paul Colby has logs that can be sawed to replace logs that were rotted out. Tim Johnson will pick the logs up from Paul and saw them and deliver them to the site for \$250. Harry Wester made a motion to allow the \$250 as long as the logs were at least 18 feet. Motion seconded by Karin Colby. Motion defeated. A new motion was made to allow up to \$500 delivered was made by Harry Wester, seconded by Alice Christensen. Motion carried. Jim has ordered 1200 lineal feet of 1x8 pine from Isaksson Lumber Co. in Herbster for the log building. The cost should be a maximum of \$480. A motion to allow for this expense was made by Jim Pellman, seconded by Harry Wester. Motion carried. We should be on the lookout for doors and windows to replace the ones that were in the building. A 36" door will be needed to allow for handicapped accessibility. The leanto will be sided with existing clapboard siding.

2. FUND RAISING: Pins and magnets should be ready for Midsummer. Calendars have been distributed to advertisers. They are ready for sale now at Midsummer and at meetings.

3. ARCHIVES: Jim described what they do at the Archives meetings. They meet every other Monday. Next meeting on May 22 at 1 p.m. More volunteers are needed. Harry Wester may be interested in helping.

4. WEBSITE: Website address is www.oldbrule.org. No further progress.

5. CENTENNIAL GIFT: A gift to the Lake Nebagamon Centennial in our name provided by an O-BHS member anonymously has been turned over to the Lake Nebagamon Centennial group.

6. PUBLICITY: Articles in the *Connection* and *Daily Telegram* are being submitted by Audrey Hakkila. She put an article in the *Telegram* regarding the calendars. The *Connection* is moving to Iron River.

7. PUBLICATIONS: A suggestion was made to publish a photo book next time with some text. Maps by Harry would be included. No action taken. Jim proposed if we do another edition of *Wisconsin Far Northwest*, we should use a perfect binding rather than a spiral one.

We discussed asking the DCHS to sell our book and calendars. Books sold to date, 546. The Lakeside Centennial book is being worked on. The bar codes have been received for our book bar code and the Lakeside Centennial book bar code. Jim reported that his mother used her credit card to attain these codes. A motion was made by Alice Christensen, seconded by Hope Swenson to reimburse Delores Pellman for the cost of the two codes (\$50). Motion carried. (\$40 amount erroneously stated. See minutes for Feb. 22nd above.)

8. MEMBERSHIPS: Dues are still being collected for 2006. Please keep track of your volunteer hours on your blue form. Blue forms should be turned in at the July meeting in order that members can be recognized at the Annual Meeting.

9. POLLARI MEMORIAL GIFT: No further progress.

10. DAVID MAKI GRANT: He has received a grant from the University of Turku, Finland, to research early Old-Brule homesteads. Paul Colby may have more information on it.

11. CENTENNIAL FARMS & HOMES: New blanks are available from Jim Pellman.

12. UPCOMING REGULAR MEETING: Will be at the Lakeside Town Hall on Wed., June 21, 6 p.m. Will be a business meeting and a workshop to set up for the Scandinavian Dinner, and to complete and put up exhibits.

13. NEXT BOARD MEETING: At Hope Swenson's, July 12, 6 p.m.

14. MIDSUMMER DINNER AND TOURS: The Lakeside Town Hall is reserved for June 22, 23 and 24, plus the Wednesday before for our meeting. A motion to order a Mr. Biffy to be delivered as work on the log house begins and to be left until June 25 was made by Alice Christensen, seconded by Hope Swenson. Motion carried. Harry Wester will order it. Paul Williams spoke in opposition to adding a leanto to the log house. Jim explained the need for it. Alice gave a report on the estimate on the signs for the dinner, which was \$350 for one side only. Alice and Eddie bought the boards, which they are donating. Harry Wester made a motion to allow for two sides of the sign, totaling \$700. Seconded by Hope Swenson. Motion carried. They will be 4x8 feet per side.

15. SCHOLARSHIP: A \$200 scholarship for a Northwestern student was voted on previously. Alice will call the school and notify them of the scholarship offer.

D. NEW BUSINESS

1. Jim Pellman and Earl Granroth reported on a conference they attended at the Northern Great Lakes Visitor Center. It was attended by 5 of our members at no cost.

E. ADJOURNMENT: Motion to adjourn made by Alice Christensen, seconded by Karin Colby. Motion carried. Meeting adjourned at 8:50.

Respectfully submitted,
Mary Ann Gronquist

Area History:
No. 50

Another excerpt (pages 35-39) from our book, *Wisconsin Far Northwest*, ©2004, 2005, 2006.

THE TOWNS OF BRULE

Minerva Johnson, Laila Magnuson, Jim Pellman

One of the earliest of the large towns in Douglas County was the first Town of Brule. Carved from its territory over the years were the modern towns of Amnicon, Brule, Cloverland, Maple, Lakeside, the Village of Poplar and part of the Village of Lake Nebagamon. The Town of Brule derives its name from the historic trout stream, the Bois Brulé River, which flows northward through the town. The river's name is derived from French words meaning "burnt wood," probably referring to bare trees darkened by forest fires which once lined the river.

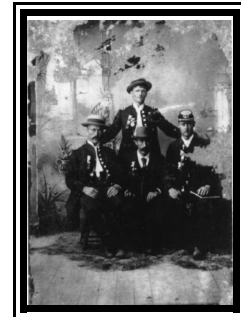
Brule's historic past goes back hundreds of years. Sieur DuLuth traveled up the Brule in 1680. In 1693 Frenchman Pierre Le Sueur went up the Brule beyond its source and built a fort near the Brule-St. Croix portage. After 1792 the fur trade built up around Fort St. Louis of the British North West Company (where Superior now stands). Traders and Indians in canoes laden with beaver and other pelts and trade goods followed the Brule River south and north joining Lake Superior and the Mississippi River system.

Bands of Ojibwe, who were here when permanent white settlers arrived, had long traded with the French, the English, and later the American Fur Company [*Southwest Company*] of John Jacob Astor. In 1842 their chiefs were induced to sign a treaty at La Pointe with the U.S. Government, permitting removal of mineral copper from South Shore lands, but reserving the right to use birch, cedar, and basswood trees and the right to hunt, fish and gather on ceded territory – a treaty which has come into later dispute.

One of many copper mines in the area, the Percival Mine, which was opened in 1873, was associated with the founder of the Clevedon Colony, Samuel Budgett of Bristol, England. It was four miles north of the Brule Station and a mile west of the Brule River, and managed to operate for just one year before an economic panic and depression hit. It was reopened twenty-five years later only to be closed permanently in 1899.

In 1880 Budgett also started the English Clevedon Colony which eventually had thirty people. It was located on Lake Superior at the mouth of the Brule. The site lay within the old Town of Brule but now lies within the Town of Cloverland. The colony was supplied by ships plying the shore of the Lake. With the rigors of weather and limited transportation Clevedon lasted less than a decade. Fred Southern, one of the colony leaders, eventually settled in Superior and ran a good business as a real estate abstractor.

Figure 6. *The Four Doherty brothers arrived from New Brunswick, Canada, in the fall of 1882, among the first to homestead in the Poplar region of the old Town of Superior. The brothers were instrumental in the separation of the Town of Brule from Superior in 1887. At one time or another all held offices in the town. Thomas, in the center, was a general store owner, Poplar's postmaster and Brule's first Town Chairman. Edward George Doherty became Maple's second postmaster and later its first Town Chairman when Maple formed in 1907. Andrew is on the right and John in back. Their father, Francis is buried with son Thomas, in Poplar. Almquist/Doherty Family Photo.*



The Northern Pacific Railroad was built through Brule in 1883. In 1892, the Duluth, South Shore and Atlantic Railroad crossed the Brule River at Winneboujou and curved north to within a half a mile of the NP near the Brule Station.

A post office was first built in the Brule hamlet in 1890. Earlier, half-Native American, Antoine Dennis, and other carriers had run mail on foot from Superior to Bayfield from 1870 to 1875. A post office in the Finnish colony of Waino in the northern part of the town served during the logging era from 1898 until Rural Free Delivery was established in 1911.

Brule grew as a logging community. After the Homestead Act of 1862 anyone 21 years of age could get up to 160 acres of land for a total fee of \$18.00. Denny's Livery in the Brule hamlet carried supplies and people to homesteads in the north and "resorts" to the south.

In 1887 the Douglas County Board finalized the boundaries of the Town of Brule (Old-Brule). Homesteaders began establishing their farms north of the Brule hamlet, supplementing their incomes by logging, growing cash crops such as peas, beans, strawberries, and by serving as domestic help. The original town boundaries would last until 1906-7 when Circuit Court Judge Aad Vinje divided the town into three, creating the new Towns of Amnicon and Maple. Some land was also shifted to the new Village of Lake Nebagamon at the same time.

People gathered regularly for church services. An Evangelical Lutheran Church was built in Waino in 1900, but in 1968 services were abandoned and the church was renamed the Waino Pioneer Chapel. It is now used for funerals and meetings. Also in 1900 a Finnish National Evangelical Lutheran Church was built and later was moved across the river. A Congregational church was built in the Brule hamlet in 1907 where President Coolidge worshiped during his stay in the summer of 1928. This congregation joined the Chippewa Presbytery in 1932 and is now the only active church in Brule. A Catholic Church, Our Lady of Snows, was built on the corner of Highway 27 and County Highway B, but, abandoned for years, the building was sold in 1952.

A school was built in the Brule hamlet in 1896. A new school was built in 1919. North of the Brule hamlet were the Juntti, Blue, Beck, Waino, and N. P. Johnson schools. South of Brule and west were the Lee and the LeClair schools. Waino also had a high school, the first class graduating in 1934. It burned in 1948 and students were bussed to the Brule hamlet and Iron River. In 1949-1950 the Union Free High School, Joint School District No. 1 was formed, now the Northwestern Schools of the School District of Maple, of which Brule became a part. Brule has two cemeteries: Ever Rest in Waino and Pine Ridge in Brule.

President Coolidge spent the summer of 1928 at Cedar Island Lodge on the Brule. Herbert Hoover announced his candidacy for President when visiting Coolidge there. Other Presidents who fished the Brule were Grover Cleveland, Ulysses S. Grant and Dwight D. Eisenhower.

One of the longest existing businesses in Brule was the Brule Coop Store, organized by the farmers in 1920. Surviving the Depression, they opened their new store in 1934. This store closed in 1970. Security Bank and Baillie Oil Company now occupy that building.

The Finnish community built two social halls: in 1913, the Round Hall in Waino, and the Coop Park on the Brule in 1931. The schools used the Coop Park Hall for play days, basketball, proms and graduations. Movies were held on Sunday nights. There were summer camps that included young people from Minnesota and Michigan. Dances were held almost every Saturday night. Gifted accordion player, Viola Turpeinen, was a popular entertainer there. The current Town Hall was built in 1937 for \$9,000 by the WPA.

The Lions Club, organized in 1958, built the pavilion and surrounding park with fund raisers such as the annual Chicken Bar B Q on the second Sunday in August. They have held many benefits for area people in need.

The Sportsman's Club, organized in 1968, has been active in preserving and improving the Brule River and its environment. They were active in banning inner tubes from the Brule, and hold a river clean up each spring.

The Northern Pacific was abandoned in August, 1985. The right of way is used at present as the Tri-County Corridor for snowmobiles, ATV and hikers, which has been good for motels and restaurants, and for the general economy.

The Wisconsin District DNR Office is located south of Brule, and close by is the Fish Hatchery. The river over its full length is enclosed in the Brule River State Forest, much of the land donated to the State by Frederick Weyerhaeuser, and there are two State campgrounds nearby where visitors from all over the U. S. can camp and put out on the River with their canoes.

Brule has an active Volunteer Fire Department and First Responder team. There is a Sanitary System and regional accessibility to natural gas. Among businesses are two restaurants, two bars with food, a bank, two gas stations with repair facilities, a post office and a motel.

The oldest business structure in Brule is Lori's Store which was built by A. J. Webster in 1905. At one time it housed the post office. The area on the hill is full of new houses, a couple of rental units, the local Head start, and an apartment complex for seniors.

Canoeing has long been popular on the Brule, from the more placid waters between Stone's Bridge to the Winneboujou Landing, to the rapids between Highway 2 and Lake Superior. Rental canoes and kayaks and guide services long been available if they are needed.

For generations fishermen have come from far and near to try their luck with the wily trout. Whether a bait or fly fisherman or woman, the Brule River has been and remains for either the right place to be in spring, summer and fall!

Notices:

THANK YOU & RECOGNITIONS:

To the **many businesses** who chose to place ads in our new calendar.

Everyone caught up on their dues for 2006. Remember to turn in your volunteer hours in July.

ENCOURAGEMENTS: To members, **Margie Koskie, Cash Christensen, Jack Gronquist, and Hope Swenson.**

OUR SYMPATHY: To the **Orval, Martin and Sarzen families** in the loss of Francis. . .

and who have we missed or forgotten?

Calendar:

June 11, Sunday, Lake Nebagamon Centennial Meet & Greet, Auditorium.

June 19, Monday, next Archives meeting at Pellmans in Maple. 1 pm.

June 21, Wednesday, next O-BHS regular meeting, Lakeside Town Hall, 6 p.m., business meeting and work session.

June 23-25, O-BHS Midsummer Celebration, Windmill and Lakeside Town Hall. Mill tours, and Saturday Meal (11-2).

June 25, Sunday, Lake Nebag. Cent., Ice Cream Social, St. Anthony's, Quilt & Fashion Shows, Rug Hooking, Auditorium.

July 17, Monday, Deadline for June issue of *O-BHS News*.

August 19, Saturday, Town of Lakeside Centennial Picnic.

WEB SITE ON LINE

The Website Committee has been working with member **Jon Winter** of **Winter Systems in Superior** on our own independent site (www.oldbrule.org). Thank you for your patience as we work to build up the site. Thanks to **Audrey Hakkila** for her efforts. **MS Web site software has been received permitting updates to the site!**

Anyone interested in joining the Old-Brule Heritage Society is encouraged to attend any of our meetings and programs. To join they may contact any member or the President at the return address below, or call him at (715) 364-2500, or our Treasurer, Shirley Kankas Rouleau, at 374-2413. Her address is PO Box 171, Lake Nebagamon, WI 54849. Our annual dues are \$15.00 for individuals, and \$25.00 for families, payable at the time of our annual meeting. Higher levels of support are always welcome.

New Members and Visitors are Always WELCOME!

Old-Brule Heritage Society, Inc.
Post Office Box 24
Maple, WI 54854